



**Spark**  
H O L L A N D

BETTER **SAMPLE CARE**

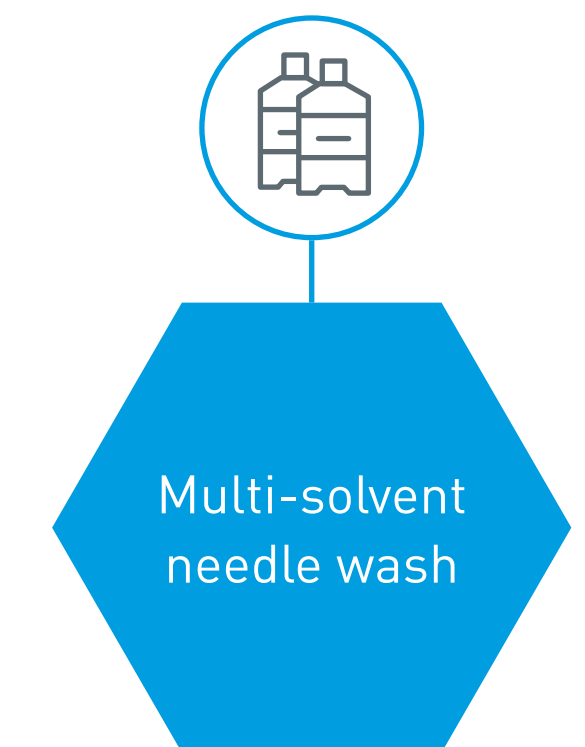
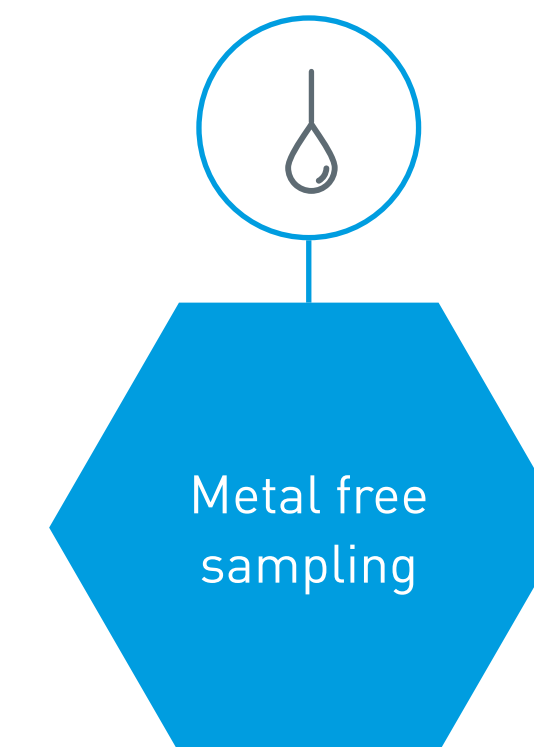
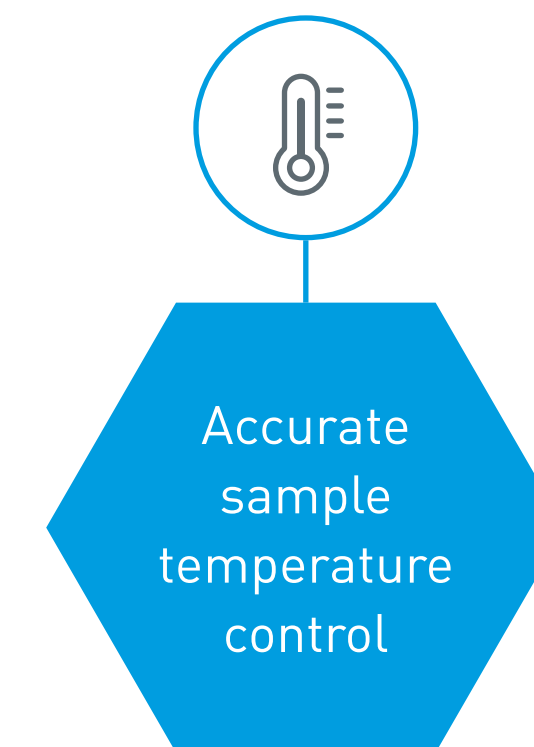
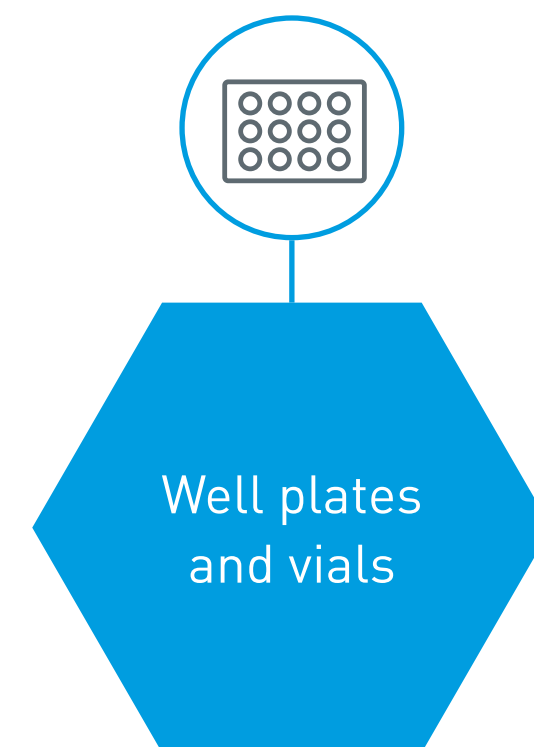
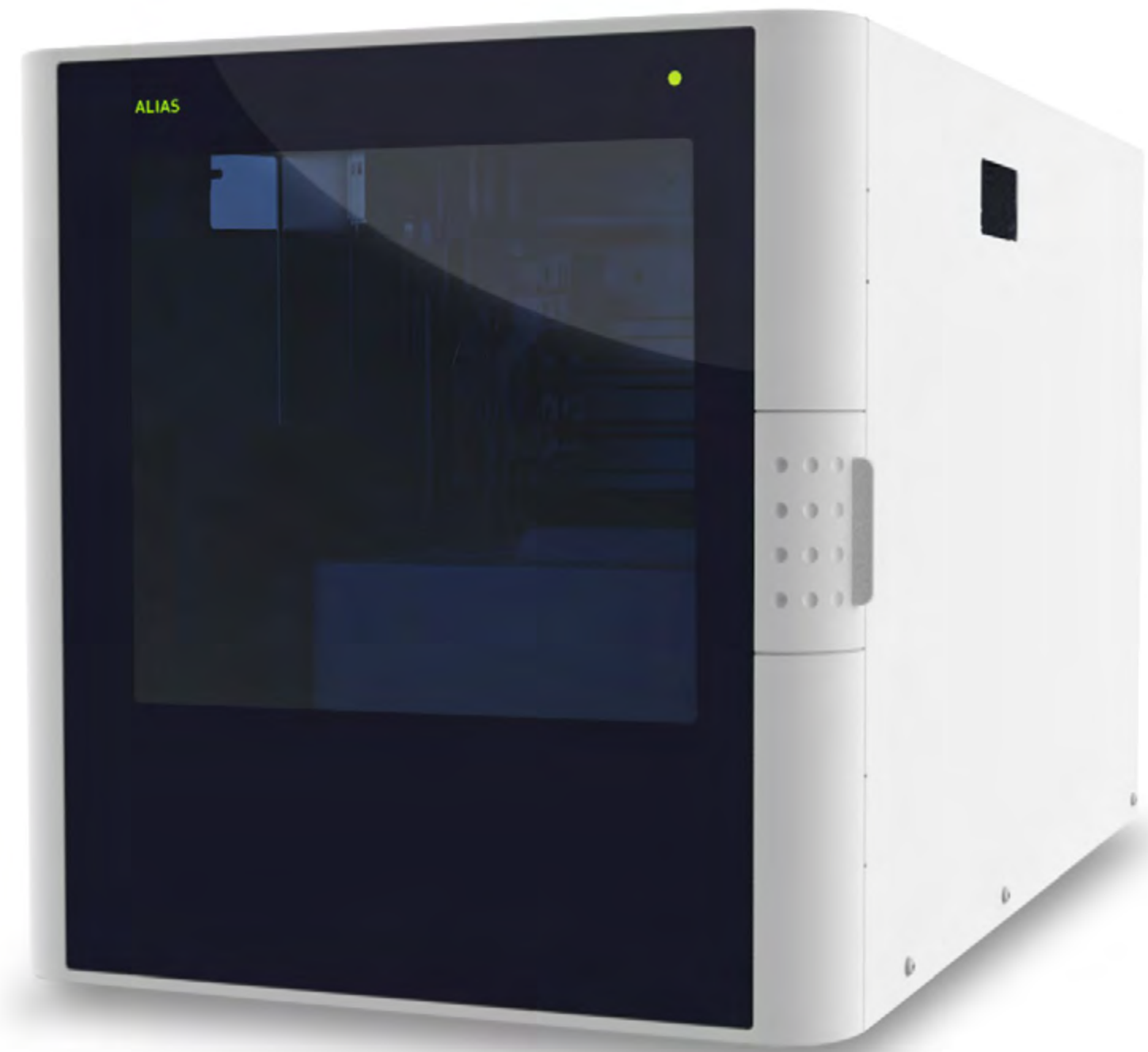
The best fit for your HPLC system

# Alias™

The best fit for your HPLC system

## Generic autosampler for HPLC and LC-MS

ALIAS™ is a generic autosampler for HPLC and LC-MS using state-of-the-art injection technology with fast injection and wash cycles. Designed to fit any system for any application. Multi-solvent needle wash virtually eliminates carry-over. ALIAS™ handles well plates and sample vials, either open or sealed, and provides true 4°C sample cooling. Its compact, stackable design and unrivalled performance make the ALIAS™ autosampler the best fit for your (U)HPLC system.



### ALIAS™ UHPLC

ALIAS™ is also available as a UHPLC compatible version permitting injection into UHPLC systems operated at pressures as high as 18,000 PSI. A special injection routine has been developed to eliminate influence of sample loop decompression on injection performance. The UHPLC version can also be equipped with sample cooling.

### ALIAS™ Prep LC

A special modification for large volume injections turns the ALIAS™ into a perfect injector for your preparative LC system. The ALIAS™ Prep version holds 24 vials of 10 mL and uses a 2.5 mL syringe. Needles, tubing and sample loop have larger capacity and allow rapid injection of sample volumes up to 10 mL.

### Features and options

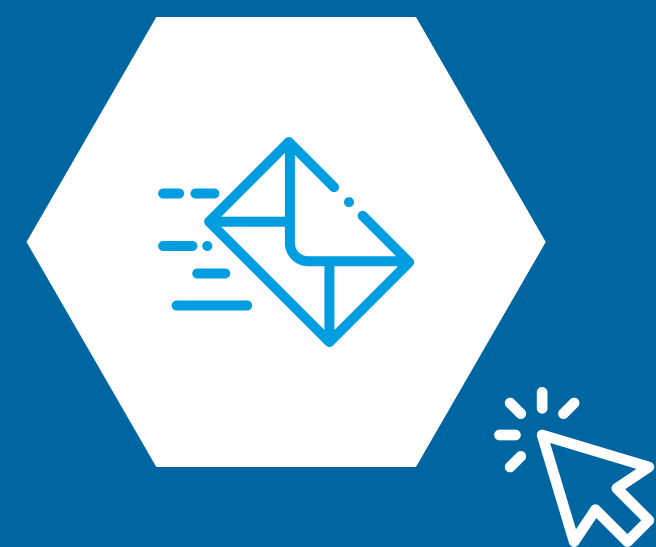
- Metal free sampling with silica-coated steel needle and PEEK valve (option)
- Reagent addition and mix capabilities for derivatization, dilution, internal standard addition
- Optional 6-port solvent selection valve (SVV) for extended selection of reagents for needle wash and reagent addition (option)
- Integrated Stream Switching (ISS): optional extra high pressure 6-port switching valve for column switching or other stream switching applications up to 18,000 PSI
- Quick-fit injection valve for fast service



## Specifications

	ALIAS	ALIAS UHPLC
<b>Injection modes</b>	Full-loop Partial loop-fill µL-pick-up	Pressure Assisted Sample Aspiration using ~10 PSI sample headspace pressure to avoid air bubbles in sample lines.
<b>Injection volume</b>	Programmable from 0 µl – 9999 µL 1 µL increments	Max injection volume depends on installed sample loop and injection mode
<b>Injection precision</b>	Full-loop injection < 0.3% RSD Partial loop-fill < 0.5% RSD µL -pick-up < 1.0% RSD	For injection volumes > 5 µL
<b>Sample viscosity</b>	0.1 – 5 cP	
<b>Injections per vial/well</b>	Max 9	
<b>Syringe volume</b>	500 µL standard 250, 1000 and 2500 µL optional	
<b>Needle wash</b> Inside and outside needle wash with drying. Wash can be programmed between injections and between vials/wells.	1 solvent 5 additional wash solvents	Programmable volume from a 250 µL wash reservoir SSV option required
<b>Injection cycle time</b>	< 60 seconds	< 20 seconds, with typical 10 µL injection (loop fill with rinse buffer)
<b>Valve switching time</b>	60 msec	
<b>Wetted parts</b>	SS316, PTFE, TEFZEL, VESPEL, glass, For Bio-kit option: PEEK and coated-steel (needle) instead of SS316	
<b>Carry-over</b>	< 0.05% with standard wash Typically < 0.01% with extra wash	“zero carry-over” can be accomplished with ALIAS™ wash capabilities
<b>Sample capacity</b>	Microtiter plates: 2 Vials: 2x 48 (1.5 mL) or 2x 12 (10 mL) - optional	Microtiter plates according to SBS standards. 96-well high and low and 384-well.
<b>Maximum vial/MTP height</b>	47 mm	including cap
<b>Sample cooling</b> Factory installed option (Peltier technology)	Minimum: 4°C ± 2°C Maximum: ambient temp -3°C	Measured as air temperature in sample compartment for maximum ambient temperature 25°C and maximum humidity 80%

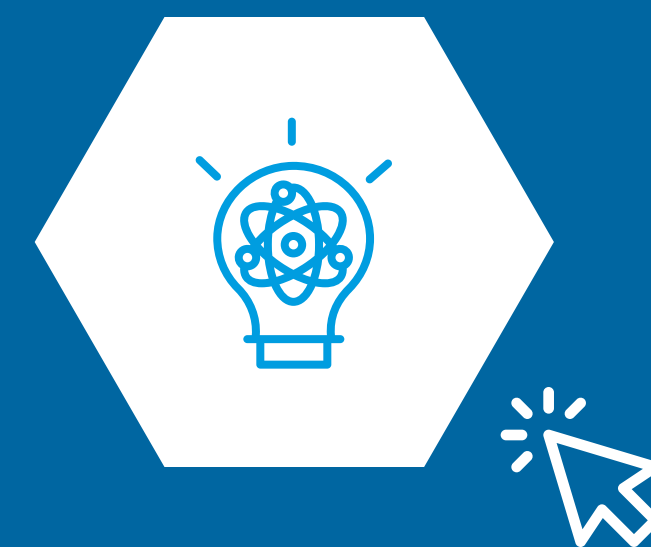




**Get in touch**



**Visit our website**



**Our technologies**



**Spark**  
H O L L A N D

Waanderweg 40 | 7812 HZ EMMEN | The Netherlands

Phone: +31 591 631700 | Fax: +31 591 630035 | E-mail: [sales@sparkholland.com](mailto:sales@sparkholland.com)